

23.10.2007.

Vol.4 , Broj 42.

Ministarstvo poljoprivrede ,
šumarstva i vodoprivrede
Republike Srbije

Izveštaj pripremio : Institut
za primenu nauke u poljo-
privredi

Email:
office@stips.minpolj.sr.gov.yu

telefon:
011-
3616283

42

www.stips.minpolj.sr.gov.yu

ŽIVA STOKA, ŽITARICE I STOČNA HRANA

Govedarstvo, grafikon cena teladi SM rase	1
Prosečna ponuda i slaba tražnja svinja i ovaca	2
Pregled cena žive stoke na stočnim pijacama	3
Cene žive stoke u klanicama	4
Prikaz cena stoke u EU	5
Kretanje cena žive stoke u Crnoj Gori	6
Situacija na tržištu žitarica	7
Nedeljni prikaz cena žitarica i stočne hrane	8
Promet robe na produktnoj berzi u Novom Sadu	9
Obim i struktura prometa robe na berzi	10

Slab promet goveda karakteristika nedelje za nama

Prosečna ponuda goveda i slab promet na većini stočnih pijaca u Srbiji obeležili su treću nedelju oktobra.

U Pančevu na pijaci je jedino ponuda teladi SM rase bila nešto bolja u odnosu na druge kategorije ali je jako loš promet istih. U klanicama je evidentirana dobra ponuda tovnih junadi SM rase, dok su cene ostale nepromenjene.

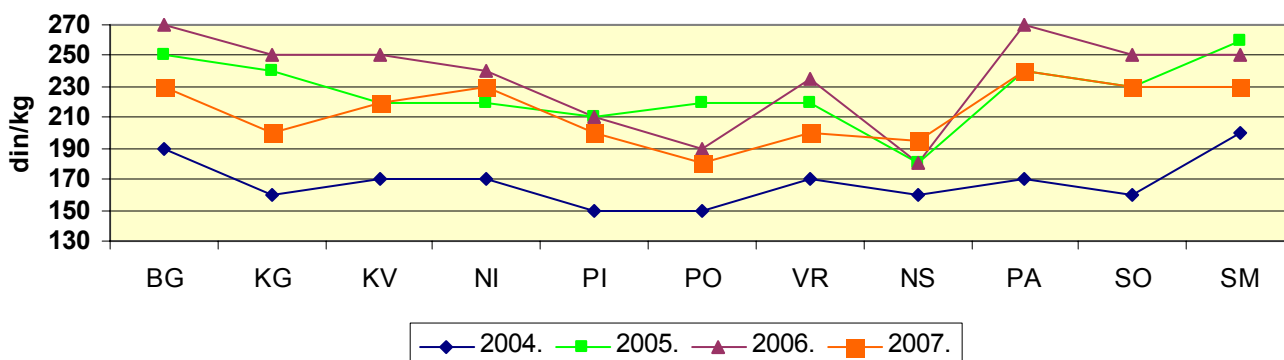
Na lozničkoj pijaci žive stoke je zbog trenutne meteorološke situacije i visoke cene kukuruza, ponuda goveda bila jako loša, a cene stagniraju. U klanicama Mačve i Podrinja cena tovne junadi preko 480 kg

iznosila je od 120 do 130 din/kg.

Na stočnoj pijaci u Kragujevcu je evidentiran pad cene junadi i teladi kako SM tako i HF rase, a razlog je znatno bolja ponuda u odnosu na tražnju i visoka cena stočnih hraniva, pa proizvođači nastoje da što pre prodaju i dođu do gotovine, jer je setva žita u toku.

Na području Čačka klanice su telad SM rase plaćale 210 din/kg, junad od 130 do 135 din/kg, dok se za tovnu junad preko 480 kg moglo dobiti najčešće 115 din/kg.

Uporedne cene teladi SM rase u trećoj nedelji oktobra



Na pijaci u Čačku tovljenici skuplji od prasadi

Na stočnoj pijaci u Čačku je uz dobru ponudu svinja protekle sedmice, cena tovljenika je bila viša od cene prasadi i prodavali su se po ceni od 90 do 110 dinara za kategorije od 80-130 kg, dok se cena prasadi kretala u intervalu od 80 do 100 din/kg. U klanicama je ponuda prasadi dobra i ona su se otkupljivala po ceni od 90 din/kg.

U Subotici farmske svinje, kao što su one sa Orahova ili iz Bečeja, kao i svinje robnih privatnih proizvođača koji imaju isti kvalitet dostižu cenu od 100 din/kg. Rok plaćanja je od 10 do 30 dana.

Na lozničkoj stočnoj pijaci - zbog

visoke cene stočnih hraniva, ponuda stoke je bila jako loša. Izostala je ponuda tovljenika, a cena prasadi se kreće od 80 do 100 din/kg.

Na pijaci žive stoke u Pančevu reporteri STIPS-a evidentirali su pad cene tovnih svinja do 130 kg. U pogledu ponude preovladavaju nakupci i malo veći broj grla zabeležen je u kategoriji prasadi, ali je promet svinja bio jako loš. U klanicama južno banatskog okruga je došlo do pada cene tovnih svinja I klase sa farmi, ali je ponuda bila dobra.

Prosečna ponuda i slaba tražnja ovaca i koza

Protekle nedelje je na većini stočnih pijaca evidentirana prosečna do dobra ponuda svih kategorija ovaca. Međutim, nastavlja se trend slabe prodaje jagnjadi i ovaca tako da su dominantne cene ostale uglavnom nepromenjene, jedino je porast cena jagnjadi zabeležen u Obrenovcu.

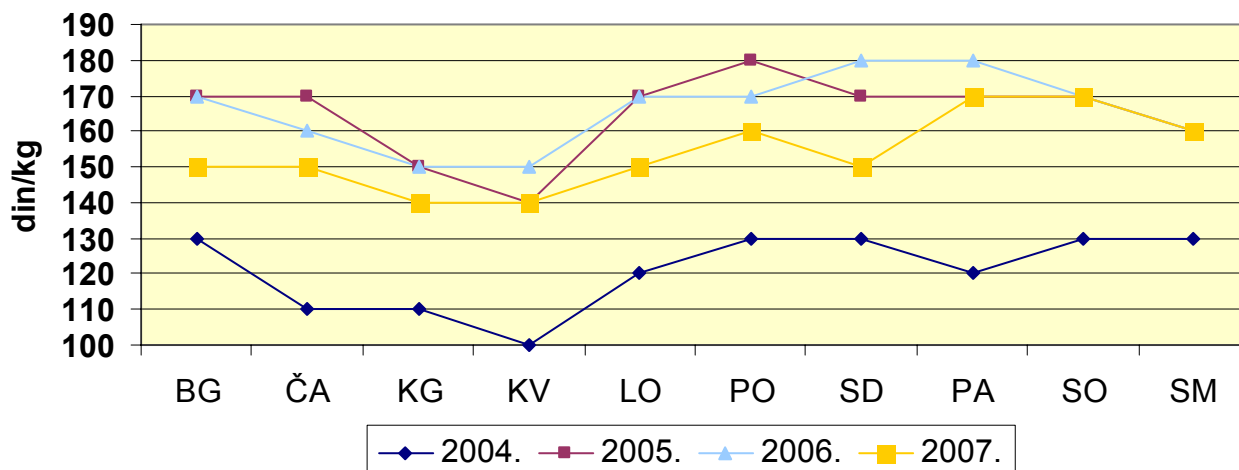
Prodajna cena jagnjadi iznosila je od minimalnih 140 do maksimalnih 190 din/kg. Najčešća cena po kojoj su se mogle kupiti ovce iznosila je 90 din/kg.

Prosečna ponuda dviski i šilježadi a cena je varirala od 110 do 140 din/kg kao i predhodnih nekoliko nedelja.

Slaba ponuda i tražnja ovnova za priplod a cena se kretala takođe od 110 do 140 din/kg u zavisnosti od priplodne kondicije i kvaliteta grla.

Uobičajena ponuda i tražnja jaradi i koza na stočnim pijacama. Cene uglavnom miruju jedino su reporteri STIPS-a iz Pančeva zabeležili pad cene jaradi.

Uporedna cena jagnjadi u trećoj nedelji oktobra



Cene žive stoke - stočne pijace u Srbiji za period 15-21.10.2007. godine

Jedinica mere din/kg	Težina/ uzrast	Rasa	Centralna Srbija												Vojvodina						Dominantna cena Srbija		
			Obrenovac	Čačak	Kragujevac	Kraljevo	Loznica	Nis - Beljin	Pirot	Požarevac	Smederevo	Osipaonica	Vranje	Zaječar	Kikinda	Novi Sad	Pančevo	Sombor	S.Mitrovica	Subotica		Zrenjanin	
Dviske	sve		140	---	120	120	130	130	---	---	---	---	120	---	---	---	---	---	---	---	---	---	120
Jagnjad	sve		150	---	140	140	150	160	180	160	160	170	80	---	---	---	---	---	---	---	---	---	170
Jarići	sve		150	---	140	120	130	120	130	---	---	150	---	---	---	---	---	---	---	---	---	---	150
Junad	do 300 kg	HF	---	---	110	---	---	---	---	---	---	---	---	---	---	---	---	---	---	---	---	---	110
Junad	do 300 kg	SM	130	---	120	100	130	130	110	---	---	135	130	---	---	---	---	---	---	---	---	---	130
Junad	>480 kg	sve	120	---	120	120	---	120	120	---	---	125	120	---	---	---	---	---	---	---	---	---	120
Koze	sve		80	---	80	80	80	80	---	---	---	80	70	---	---	---	---	---	---	---	---	---	80
Krave za klanje	HF		---	---	---	---	---	---	---	---	---	---	---	---	---	---	---	---	---	---	---	---	---
Krave za klanje	SM		80	---	80	78	80	80	70	75	---	75	70	---	---	---	---	---	---	---	---	---	80
Krmače za klanje	>130 kg	sve	70	---	85	70	---	---	---	65	75	---	75	---	---	---	---	---	---	---	---	---	70
Ovca	sve		100	---	90	90	100	---	80	100	100	90	90	---	---	---	---	---	---	---	---	---	90
Ovnovi za priplod	sve		140	---	110	110	---	---	---	---	---	120	130	---	---	---	---	---	---	---	---	---	110
Prasad do 15 kg	sve		100	---	80	---	95	110	110	75	85	100	110	---	---	---	---	---	---	---	---	---	100
Prasad do 25 kg	sve		90	---	80	90	90	100	100	70	80	100	100	---	---	---	---	---	---	---	---	---	90
Priplodne junice	sve		---	---	---	---	---	---	---	---	---	---	---	---	---	---	---	---	---	---	---	---	---
Priplodne krave	HF		---	---	---	---	---	---	---	---	---	---	---	---	---	---	---	---	---	---	---	---	---
Priplodne krave (din/grlu)	SM		---	---	---	---	---	---	---	---	---	---	160	---	---	---	---	---	---	---	---	---	---
Šilježad	sve		140	---	120	130	140	---	---	140	130	---	130	---	---	---	---	---	---	---	---	---	130
Telad	80-160 kg	HF	190	---	160	---	---	---	---	---	---	---	---	---	---	---	---	---	---	---	---	---	190
Telad	80-160 kg	SM	230	---	200	220	---	230	200	180	---	200	200	---	---	---	---	---	---	---	---	---	230
Tovljenici	80-130 kg	sve	90	---	85	120	---	80	---	80	90	100	90	---	---	---	---	---	---	---	---	---	80
Tovljenici	>130 kg	sve	80	---	90	90	---	70	---	70	80	90	120	---	---	---	---	---	---	---	---	---	90

Klanične cene žive stoke u Srbiji po okruzima za period 15-21.10.2007. godine

Jedinica mere din/kg	Težina/ uzrast	Rasa	Grad Beograd	Braničevski	Jablanički, Pčinjski	Južno - bački	Južno - banatski	Mačvanski, Kolubarski	Nišavski, Toplički	Podunavski	Rasinski	Raški	Severno - bački	Severno-banatski	Srednj-banatski	Sremski	Zajčarski, Borski	Zapadno - bački	Zlatiborski, Moravski	Šumadjski, Pomoravski	Dominantna cena Srbija	
Bikovi	>500 kg	HF	125	110	--	--	115	--	--	--	--	--	--	--	110	110	--	--	--	--	110	110
Bikovi	>500 kg	SM	135	120	120	--	120	125	120	120	--	110	--	--	120	130	120	--	--	--	120	120
Jagnjad			--	160	170	160	140	150	180	160	--	130	--	--	--	180	150	--	--	--	140	160
Jarad			--	--	--	--	--	--	--	--	--	--	--	--	--	120	--	--	--	--	--	--
Junad	350-480		--	--	125	115	--	115	125	--	--	115	--	--	120	120	--	--	--	--	--	115
Junice			115	100	100	100	100	105	--	--	--	105	--	--	90	110	--	--	--	--	100	100
Koze			--	--	--	--	--	--	--	--	--	--	--	--	--	70	--	--	--	--	--	--
Krave za klanje			90	75	75	--	80	75	70	80	--	75	--	--	80	90	70	--	--	--	85	75
Ovce			--	80	80	85	70	100	80	100	--	90	--	--	--	90	--	--	--	--	90	80
Prasad	< 25 kg		--	75	100	80	90	95	80	80	--	75	--	--	100	110	--	--	--	--	90	80
Telad	80-160 kg	SM	--	190	200	--	--	240	200	--	--	200	--	--	--	250	190	--	--	--	200	200
Tovljenici I klasa	90-120 kg		110	90	100	105	105	85	90	100	--	90	--	--	90	120	85	--	--	--	90	90
Tovljenici II klasa	90-120 kg		90	80	90	80	85	80	80	80	--	75	--	--	80	105	70	--	--	--	80	80
Tovljenici	>120 kg		80	60	80	--	78	70	70	70	--	65	--	--	70	90	70	--	--	--	70	70
Šiješad			--	120	130	--	--	140	--	--	--	120	--	--	--	130	--	--	--	--	110	120

**Cene žive stoke–stočne pijace u Crnoj Gori
11-17.10.2007.godine**

Naziv životinje	Težina/uzrast	Rasa	Jedinica mere	Dominantne cene (u €)						
				Bar	Berane	Bjelo Polje	Niškić	Pijevlja	Podgorica	Prosek CG
Telad	80-160 kg	SIM	kg.	-	2.5	2.5	-	2.7	2.5	2.55
Telad	80-160 kg	ostala	kg.	2.8	2.4	2.3	2.9	2.6	2.5	2.58
Junad	do 300 kg	SIM	kg.	-	-	-	-	-	1.8	1.8
Junad	do 300 kg	ostala	kg.	2	-	1.5	1.95	-	-	1.82
Junad	više od 300 kg	ostala	kg.	1.6	1.5	1.35	1.7	1.6	1.8	1.59
Krave za klanje		SIM	kg.	-	1.2	1.2	-	-	-	1.2
Krave za klanje		ostale	kg.	0.8	1	0.8	0.9	1	0.7	0.88
Prasad		sve rase	kg.	-	2	2.45	2.75	2.5	2.4	2.42
Jagnjad		sve rase	kg.	-	2.2	2.15	2.35	-	-	2.23
Šilježad		sve rase	kg.	2.2	-	-	-	-	2.3	2.25
Ovce za klanje		sve rase	kg.	-	2	-	-	-	-	2
Ovovi		sve rase	kg.	-	-	-	2	-	-	2
Jarad		sve rase	kg.	-	2	2.3	2.5	-	-	2.27
Priplodne ovce		sve rase	grlo	-	100	90	100	100	-	97.5
Priplodne koze		sve rase	grlo	80	70	70	80	-	90	78
Priplodne junice		HF	grlo	-	1200	-	1200	-	-	1100
Priplodne junice		smeđe	grlo	-	-	-	-	1000	-	1000
Priplodne krave		HF	grlo	-	-	-	1200	-	-	1200
Priplodne krave		smeđe	grlo	-	-	-	-	1000	-	1000
Priplodne krave		melez	grlo	680	800	750	600	-	600	686

1 € = 77.25 dinara

Izvor : AMIS



Žitarice i stočna hrana

Najčešća prodajna cena kukuruza na pijacama je od 18 din/kg u Beogradu, Nišu, Požarevcu, Novom Sadu i Sremskoj Mitrovici do 21 din/kg u Subotici, Kragujevcu i Kraljevu. Kukuruz u rinfuzu imao je slabu ponudu a prodavao se po ceni od 17 din/kg. U silosima je uz slabu ponudu imao cenu od 16 do 17.5 din/kg.

Cena pšenice je takođe u blagom porstu u odnosu na predhodne nedelje. Na pijacama se nudi po ceni od 16 din/kg u Smederevu i Sremskoj Mitrovici do 22 din/kg u Kraljevu. Cena pšenice u rinfuzu na pijaci je od 16 din/kg u Somboru do 22 din/kg u Zaječaru. Pšenica u rinfuzu se prodavala u silosima Srbije od 11 din/kg u Pančevu do 17.4 din/kg u Beogradu.

Tokom ove nedelje slaba ponuda stočnog ječma u rinfuzu a cena se kretala od 14 do 15 din/kg, dok je u vrećama od 50 kg koštao od 15 do 22 din/kg. Cene su u blagom porastu u odnosu na prošlu nedelju.

Lucerkino seno u balama je na gazdinstvima imalo cenu od 8 din/kg u Loznici do 15 din/kg u Pančevu i Vranju. Na pijaci se cena sena kretala od 10 din/kg u Sremsko Mitrovici, Loznici do 16 din/kg u Smederevu i Pančevu.

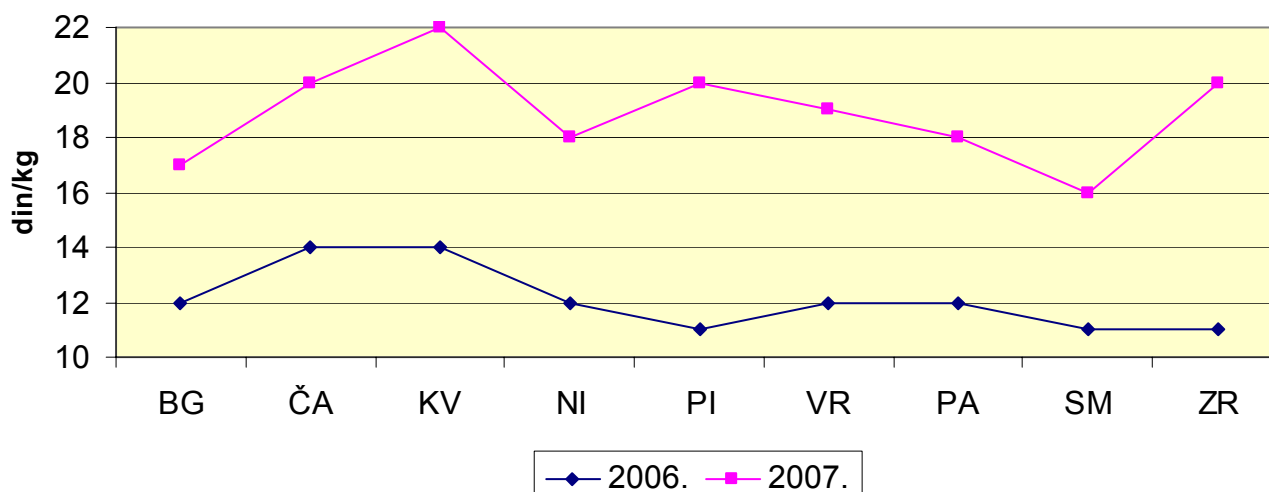
Lucerkino brašno je i ove nedelje bilo najjeftinije u Somboru, 14 din/kg, a najskuplje u Loznici, Pirotu i Pančevu 30 din/kg.

Ponuda sojine sačme u maloprodaji je bila uobičajena, a cena varira od 32 do 45 din/kg. Najskuplja je bila u Pančevu dok je najjeftinija u Požarevcu.

Nepromenjena cena stočnog brašna u odnosu na prošlu nedelju i kretala se od 12 din/kg u Požarevcu do 16 din/kg u Vranju i Sremskoj Mitrovici.

Prodaja suncokretove sačme je bila standardna i mogla se pazariti od 20 u Zrenjaninu, Loznici i Nišu do 35 din/kg u Zaječaru, što je na nivou prošle nedelje.

Uporedna cena pšenice na pijacama u trećoj nedelji oktobra



Cene žitarica i stočne hrane u Srbiji za period 15-21.10.2007. godine

Proizvod	Jed.Mere	Mesto prodaje	Centralna Srbija													Vojvodina								
			Beograd	Obrenovac	Čačak	Kragujevac	Kraljevo	Loznica	Niš	Pirot	Požarevac	Smederevo	Vranje	Zaječar	Kikinda	Novi Sad	Pančevo	Sombor	S.Mitrovica	Subotica	Zrenjanin			
Kukuruz/okrunjen p.s.	Džak 50 kg	Pijaca	18	---	21	21	---	21	---	18	---	18	19	19	20	20	20	---	18	20	---	18	21	20
Kukuruz/okrunjen p.s.	Rinfuz	Pijaca	---	---	20	---	---	---	---	---	---	---	---	---	22	---	---	---	17	---	17	17	18.2	17.7
Kukuruz/okrunjen p.s.	Džak 50 kg	Silos/mlin	---	---	---	---	---	---	---	---	---	---	---	---	---	---	---	---	---	---	---	---	---	---
Kukuruz/okrunjen p.s.	Rinfuz	Silos/mlin	---	---	---	---	---	---	---	---	---	16	---	---	---	---	---	---	---	18	---	---	---	---
Kukuruz/okrunjen v.s.	Džak 50 kg	Pijaca	---	---	---	---	20	---	---	---	---	---	19	22.2	---	---	---	---	---	---	---	---	---	---
Kukuruz/okrunjen v.s.	Rinfuz	Pijaca	---	---	---	---	---	---	---	---	---	---	---	---	---	---	---	17.5	---	---	---	---	---	---
Kukuruz/okrunjen v.s.	Džak 50 kg	Silos/mlin	---	---	---	---	---	22	---	---	---	---	---	---	---	---	---	---	---	---	---	20	---	---
Kukuruz/okrunjen v.s.	Rinfuz	Silos/mlin	---	---	---	---	---	---	---	---	---	---	---	---	---	---	---	---	---	---	---	---	---	---
Kukuruz u klip	Rinfuz	Pijaca	---	---	---	---	15	---	---	---	---	---	---	---	---	---	---	---	12	---	11	13	---	---
Lucerkino seno u balama	Bala/12 do 25kg	Gazdinstvo	11	---	17	---	8	---	10	14	14	14	15	12	---	---	---	---	---	15	---	9	---	12
Lucerkino seno u balama	Bala/12 do 25kg	Pijaca	12	---	---	---	10	15	---	14	16	---	---	---	---	---	---	160	16	16	11	10	---	12
Lucerkino brašno min.15%prot.	Džak 25 kg.	Maloprodaja	23	---	28	---	30	22	30	24	23	---	---	26	---	---	---	---	---	30	14	23	25.0	20
Pšenica	Džak 50 kg	Pijaca	18	---	20	22	---	18	20	---	16	19	20	---	---	---	---	---	---	18	---	16	---	---
Pšenica	Rinfuz	Pijaca	---	---	19	---	---	---	---	---	---	---	---	22	---	---	---	---	20	---	16	---	---	16.5
Pšenica	Rinfuz	Silos/mlin	17.4	---	---	---	---	---	---	13	12	---	---	---	---	---	---	---	---	11	---	15	---	---
Sojina sačma 44% prot.	Džak 50 kg	Maloprodaja	40	---	38	40	38	33	37	32	37	---	---	40	---	---	---	---	40	45	38	43	40	39
Stočni ječam	Rinfuz	Pijaca	---	---	---	---	---	---	---	---	---	---	---	---	---	---	---	---	---	---	14	15	---	---
Stočni ječam	Džak 50 kg	Pijaca	19	---	---	---	20	20	---	---	17	17	---	---	---	---	---	---	---	18	14.5	15	21	---
Stočni ječam	Rinfuz	Silos/mlin	---	---	---	---	---	---	---	---	---	---	---	---	---	---	---	---	---	---	---	---	---	---
Stočno brašno	Džak 33 kg	Silos/mlin	13.5	---	---	---	13	13	15	12	13.5	16	---	---	---	---	---	---	---	---	---	16	---	14
Suncokretova sačma 33% prot.	Džak 33 kg	Maloprodaja	23	---	27	30	20	20	25	21	24	---	---	35	---	---	---	---	---	---	---	---	---	---

**Promet robe na produktnoj berzi u Novom Sadu
od 15. do 19. oktobra 2007. godine**

Najvažnije ove nedelje:

- nova najviša cena pšenice
- pad cene kukuruza
- zadovoljavajući promet soje i semenske pšenice
- dobra ponuda, ali mali promet mineralnog đubriva
- oktobarsko kretanje „PRODEX-a“.

Protekla nedelja je donela novu najvišu cenu pšenice, koja iznosi 21,17 din/kg sa PDV-om (19,60 din/kg bez PDV-a). I pored nedeljnog trenda pada cene, u odnosu na maksimalni cenovni nivo od prošlog petka, nedeljni ponder je veći u odnosu na prethodnu nedelju (20.57 din/kg sa PDV-om, što je rast od 2,13%).

	ponedeljak						utorak						sreda						četvrtak						Petak					
sati	8	9	10	11	12	13	8	9	10	11	12	13	8	9	10	11	12	13	8	9	10	11	12	13	8	9	10	11	12	13
cena ponude (din/kg)	-	-	-	-	20.52	20.52	-	-	20.57	-	-	-	-	-	20.52	21.17	-	-	20.63	20.63	20.63	20.63	20.63	20.63	-	-	-	-	-	-
zaključena cena (din/kg)	-	-	-	-	20.52	20.52	-	-	20.57	-	-	-	-	-	20.52	21.17	-	-	-	-	-	-	-	-	-	-	-	-	-	-
obim trgovanja (tona)	-	-	-	-	500	500	-	-	30	-	-	-	-	-	1.000	100	-	-	-	-	-	-	-	-	700	-	-	-	-	-

	ponedeljak						utorak						sreda						četvrtak						Petak					
sati	8	9	10	11	12	13	8	9	10	11	12	13	8	9	10	11	12	13	8	9	10	11	12	13	8	9	10	11	12	13
cena ponude (din/kg)	19.01	19.00	18.90	18.90	18.90	18.90	18.90	18.90	18.90	18.90	18.90	18.90	18.85	18.90	18.36	18.90	18.90	18.90	18.90	18.90	18.90	18.90	18.90	18.90	-	-	18.68	-	-	
zaključena cena (din/kg)	19.01	19.01	18.90	-	-	-	-	-	-	18.90	-	-	-	18.85	18.90	18.36	-	-	18.90	18.90	-	-	-	-	-	-	18.68	-	-	
obim trgovanja (tona)	25	25	50	-	-	-	-	-	-	100	-	-	200	100	220	-	-	50	50	-	-	-	-	-	-	-	100	-	-	

Cena kukuruza ima jasan silazni trend. Ona se kretala od 18.36-19.01 din/kg sa PDV-om (17.00-17.60 din/kg bez PDV-a), uz prosečnu cenu od 18.78 din/kg sa PDV-om, što je pad od 2,24% u odnosu na prethodnu nedelju.

Nakon prošlonedeljnog rekorda (12.10.2007.), indeks cena poljoprivrednih proizvoda na „Produktnoj berzi“ (PRODEX) je u toku nedelje za nama u padu. Vrednost indeksa je na dan 19.10.2007., iznosila 170,57 indeksnih poena, što znači da je isti pao u odnosu na vrednost od 12.10.2007. za 2,09 indeksnih poena. Osnovni uzrok ovakvog pada je pad cene kukuruza.

Iz ove nedelje izdvajamo i stabilnu cenu sojinog zrna, kao i solidan promet semenske pšenice, koji je i logičan s obzirom na optimalne rokove setve.

Ukupan obim prometa u protekloj nedelji je iznosio 4.675 tona, što vrednosno iskazano iznosi 99.759.950,00 dinara.

Obim i struktura prometa u protekloj nedelji dati su u tabeli:

roba	ponuđena količina (tona)	cena ponude din/kg sa PDV-om	zaključena količina (tona)	zaključena cena din/kg sa PDV-om
kukuruz, veštački sušen, rod 2007., rinfuz	3.240	18.36-19.12	820	18.36-19.01
kukuruz, rod 2007., vlage 20%	150	17.64	150	17.64
kukuruz, rod 2007., vlage do 15.5%	25	18.14	25	18.14
semenska pšenica	120	28.08-30.24	120	28.08-30.24
pšenica, merkantilna, JUS kvalitet, rod 2007., rinfuz	2.830	20.52-21.17	2.830	20.52-21.17
soja, zrno, rod 2007., rinfuz	580	30.24-30.78	530	30.24
stočno brašno	125	13.57	125	13.57
suncokretova sačma, min. 33%, rinfuz	100	27.14-27.85	50	27.14
npk 16:16:16	25	23.76	25	23.76
evro dizel	100	64.90	-	-
repin rezanac	50	19.23	-	-
sojina sačma, min 44%, rinfuz	50	33.75	-	-
an	1.000	17.69	-	-
urea	800	23.17	-	-